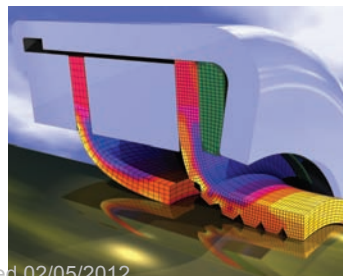


Serving the world's medical industry



Global manufacturing and support
Trelleborg Sealing Solutions is one of the world's leading experts in polymer sealing technology.



Extensive test facilities
FEA modeling techniques are also used in conjunction with test rigs at our fully-resourced design and application centers to prove the effectiveness of our seal, bearing and custom solutions.



Since our facility first opened in 1955, we have manufactured engineered silicone products for a variety of medical applications. We manufacture our SF Medical line of products in a controlled environment equivalent to class 100,000 conditions, with ambient temperature, humidity, and particulate count monitored regularly. This facility follows strict “Good Manufacturing Standards” as defined by the FDA and in accordance with their quality standards AS9100 ISO9001-2000. It is also registered with the FDA and undergoes regular audits by key customers to maintain approvals.

We recognize that time to market is a key component of success for our customers. To help ensure the highest quality products, our manufacturing personnel work closely with customers to deliver products specifically engineered to meet their needs with a quick turnaround time.

Adding value for our customers is important to our staff. A key differentiator for our operation is our proven design and engineering capabilities. Our innovative and experienced design team provide the proper engineered solutions for our customers.

In October 2005, SF Medical was acquired by Trelleborg Sealing Solutions, one of four business areas in the Trelleborg Group. Trelleborg is a global industrial group whose leading positions are based on advanced polymer technology and in-depth applications know-how. The Trelleborg Group has annual sales of \$3 billion, with 24,000 employees in 40 countries.

Trelleborg Sealing Solutions is a leading global supplier of high-quality polymer products for countless applications. The business area has annual sales of approximately \$660 million with 5,600 employees. Trelleborg Sealing Solutions is committed to serving the medical device and pharmaceutical industries and the SF Medical line of products find a strategic fit within the company’s existing portfolio.

The SF Medical line of products is manufactured at the facility in Hudson, Massachusetts with the level of quality and service our customers expect.



Proven solutions for medical

We offer proven capabilities in a variety of applications including catheters, dental equipment, diagnostic equipment, enteral feeding pumps, stents, sanitary fluid transfer and surgical tools and trays.

Version uploaded 02/05/2012



SF100HP

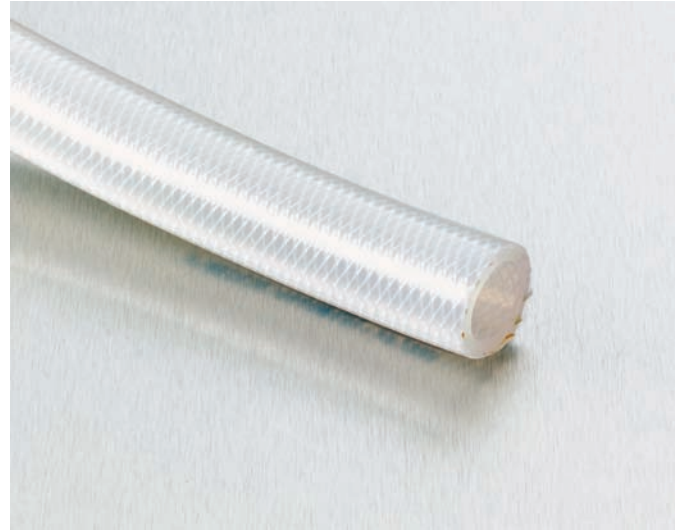
Platinum-Cured Single Ply Polyester Braid Reinforced USP Class VI Silicone Hose

Features:

- High pressure ratings
- Excellent flexibility
- Sterilizable
- Autoclavable
- Imparts no taste or odor
- Available in bulk or assemblies
- Pigmented outer covers available
- Available in 25 ft, 50 ft, and 100 ft lengths
- Temperature range: -80°F to 500°F (-62°C to 260°C)

Applications:

- Pumps
- Pharmaceutical processing
- Vessel or tank transfer
- Cell cultures
- Load cells



Approvals:

- Meets USP Class VI, FDA, and USDA requirements

| Part Number | Hose ID, IN. | Recommended Working Pressure PSI at 68°F | Min Burst Pressure PSI at 68°F | Min Bend Radius, IN. | Weight Per Foot, LB. |
|-------------|--------------|--|--------------------------------|----------------------|----------------------|
| SH1001 | 0.0625 | 175 | 700 | 1.00 | C/F |
| SH1002 | 0.125 | 175 | 700 | 1.00 | C/F |
| SH1003 | 0.187 | 165 | 650 | 1.25 | C/F |
| SH1004 | 0.250 | 160 | 575 | 1.25 | .080 |
| SH1005 | 0.312 | 140 | 550 | 1.75 | .100 |
| SH1006 | 0.375 | 125 | 500 | 2.00 | .116 |
| SH1008 | 0.500 | 130 | 425 | 2.50 | .150 |
| SH1010 | 0.625 | 100 | 350 | 3.00 | .220 |
| SH1012 | 0.750 | 85 | 275 | 3.50 | .260 |
| SH1014 | 0.875 | 70 | 250 | 4.00 | .305 |
| SH1016 | 1.000 | 65 | 225 | 5.00 | .342 |
| SH1020 | 1.250 | 55 | 180 | 6.00 | .374 |

Note: For every 100°F increase in working temperature, stated burst pressure and vacuum rating will decrease by 10%.
 Note: C/F = Consult Factory

SF200HP

Platinum-Cured Double Ply Polyester Braid Reinforced USP Class VI Silicone Hose



Features:

- High pressure ratings
- Excellent flexibility
- Sterilizable
- Autoclavable
- Imparts no taste or odor
- Available in bulk or assemblies
- Pigmented outer covers available
- Available in 25 ft lengths
- Temperature range: -80°F to 500°F (-62°C to 260°C)



Applications:

- Pump applications
- Pharmaceutical processing
- Vessel or tank transfer
- Cell cultures
- Load cells

Approvals:

- Meets USP Class VI, FDA, and USDA requirements

| Part Number | Hose ID, IN. | Recommended Working Pressure PSI at 68°F | Min Burst Pressure PSI at 68°F | Min Bend Radius, IN. | Weight Per Foot, LB. |
|-------------|--------------|--|--------------------------------|----------------------|----------------------|
| SH2004 | 0.250 | 200 | 800 | 1.75 | .085 |
| SH2005 | 0.312 | 195 | 775 | 2.00 | .105 |
| SH2006 | 0.375 | 190 | 750 | 2.25 | .118 |
| SH2008 | 0.500 | 170 | 675 | 2.75 | .160 |
| SH2010 | 0.625 | 150 | 600 | 3.25 | .221 |
| SH2012 | 0.750 | 135 | 525 | 3.75 | .265 |
| SH2014 | 0.875 | 125 | 500 | 4.00 | .315 |
| SH2016 | 1.000 | 120 | 475 | 5.00 | .350 |
| SH2018 | 1.125 | 115 | 460 | 6.00 | .365 |
| SH1020 | 1.250 | 112 | 450 | 6.50 | .378 |

Note: For every 100°F increase in working temperature, stated burst pressure and vacuum rating will decrease by 10%.

SF400HP

Platinum-Cured 4-Ply Fabric Reinforced USP Class VI Silicone Hose



Features:

- Excellent flexibility
- Sterilizable
- Autoclavable
- Imparts no taste or odor
- Available in bulk or assemblies
- Pigmented outer covers available
- Available in 10 ft lengths
- Temperature range: -80°F to 500°F (-62°C to 260°C)

Applications:

- Some vacuum pump applications
- Pharmaceutical processing
- Biotechnology
- Bulk transfer
- Load cells



Approvals:

- Meets USP Class VI, FDA, and USDA requirements

| Part Number | Hose ID, IN. | Min Burst Pressure PSI at 68°F | Vacuum Rating, IN. | Min Bend Radius, IN. |
|-------------|--------------|--------------------------------|--------------------|----------------------|
| SH4008 | 0.500 | 575 | 29 | 3.00 |
| SH4012 | 0.750 | 500 | 25 | 4.00 |
| SH4016 | 1.00 | 450 | 22 | 7.00 |
| SH4020 | 1.25 | 425 | 19 | 10.00 |
| SH4022 | 1.38 | 415 | 18 | 11.00 |
| SH4024 | 1.50 | 400 | 17 | 12.00 |
| SH4026 | 1.63 | 350 | 16 | 20.00 |
| SH4032 | 2.00 | 300 | 14 | 30.00 |
| SH4036 | 2.25 | 275 | 11 | C/F |
| SH4040 | 2.50 | 250 | 9 | C/F |
| SH4044 | 2.75 | 250 | 7 | C/F |
| SH4048 | 3.00 | 250 | 6 | C/F |
| SH4058 | 3.50 | 225 | 5 | C/F |
| SH4064 | 4.00 | 175 | 4 | C/F |

Note: For every 100°F increase in working temperature, stated burst pressure and vacuum rating will decrease by 10%.

Note: C/F = Consult Factory

SF800HP

Platinum-Cured Polyester Monofilament Reinforced USP Class VI Silicone Hose



Features:

- Excellent flexibility
- Sterilizable
- Autoclavable
- Imparts no taste or odor
- Available in bulk or assemblies
- Pigmented outer covers available
- Available in 10 ft lengths
- Temperature range: -80°F to 500°F (-62°C to 260°C)

Applications:

- Some vacuum pump applications
- Pharmaceutical processing
- Biotechnology
- Bulk transfer
- Load cells



Approvals:

- Meets USP Class VI, FDA, and USDA requirements

| Part Number | Hose ID, IN. | Min Burst Pressure PSI at 68°F | Vacuum Rating, IN. | Min Bend Radius, IN |
|-------------|--------------|--------------------------------|--------------------|---------------------|
| SH8008 | 0.500 | C/F | C/F | C/F |
| SH8012 | 0.750 | 600 | 29 | 1.75 |
| SH8016 | 1.00 | 600 | 26 | 2.50 |
| SH8020 | 1.25 | 600 | 26 | 3.25 |
| SH8022 | 1.38 | 600 | 26 | 3.50 |
| SH8024 | 1.50 | 600 | 26 | 4.00 |
| SH8026 | 1.63 | 575 | 22 | 4.50 |
| SH8028 | 1.75 | 550 | 20 | 5.00 |
| SH8032 | 2.00 | 525 | 18 | 5.50 |
| SH8036 | 2.25 | 525 | 18 | 5.75 |
| SH8040 | 2.50 | 500 | 18 | 6.00 |
| SH8044 | 2.75 | C/F | C/F | C/F |
| SH8048 | 3.00 | C/F | C/F | C/F |
| SH8056 | 3.50 | C/F | C/F | C/F |
| SH8064 | 4.00 | C/F | C/F | C/F |

Note: For every 100°F increase in working temperature, stated burst pressure and vacuum rating will decrease by 10%.

Note: C/F = Consult Factory

SF900HP

Platinum-Cured 4-Ply Fabric & SS Wire Reinforced USP Class VI Silicone Hose



Features:

- Excellent flexibility
- Sterilizable
- Autoclavable
- Imparts no taste or odor
- Available in bulk or assemblies
- Pigmented outer covers available
- Available in 10 ft lengths
- Temperature range: -80°F to 500°F (-62°C to 260°C)

Applications:

- Some vacuum pump applications
- Pharmaceutical processing
- Biotechnology
- Bulk transfer
- Load cells



Approvals:

- Meets USP Class VI, FDA, and USDA requirements

| Part Number | Hose ID, IN. | Min Burst Pressure PSI at 68°F | Vacuum Rating, IN. | Min Bend Radius, IN. |
|-------------|--------------|--------------------------------|--------------------|----------------------|
| SH9008 | 0.500 | 800 | 29.92 | 2.50 |
| SH9012 | 0.750 | 800 | 29.92 | 3.50 |
| SH9016 | 1.00 | 800 | 29.92 | 5.00 |
| SH9020 | 1.25 | 800 | 29.92 | 6.50 |
| SH9022 | 1.38 | 800 | 29.92 | 7.25 |
| SH9024 | 1.50 | 800 | 29.92 | 8.00 |
| SH9026 | 1.63 | 800 | 29.92 | 9.00 |
| SH9028 | 1.75 | 775 | 29.92 | 10.00 |
| SH9032 | 2.00 | 750 | 29.92 | 11.00 |
| SH9036 | 2.25 | 725 | 29.92 | 11.00 |
| SH9040 | 2.50 | 700 | 29.92 | 11.00 |
| SH9044 | 2.75 | 650 | 29.92 | 13.00 |
| SH9048 | 3.00 | 600 | 29.92 | 16.50 |
| SH9056 | 3.50 | 550 | 29.92 | 19.00 |
| SH9064 | 4.00 | 500 | 29.92 | 22.50 |

Note: For every 100°F increase in working temperature, stated burst pressure and vacuum rating will decrease by 10%.
 Note: C/F = Consult Factory

ST01 & ST02 Stainless Steel Braided Smooth-Bore PTFE Hose

Features:

- Outer cover 304 stainless steel braided
- Excellent chemical resistance
- Steam cleanable (SIP)
- Rated for continuous steam
- Detergent or caustic cleanable (CIP)
- Imparts no taste or odor
- Available in bulk or assemblies
- Pigmented outer covers available
- Non-stick, non-contaminating tube is easily cleaned
- Temperature range: -100°F to 500°F (-73°C to 260°C)

Applications:

- Vacuum and pump applications
- Pharmaceutical processing
- Biotechnology
- Chemical transfer
- Acid transfer

Approvals:

- Meets USP Class VI, FDA, 3A, and USDA requirements



| Item # White | Item # Black Conductive | Hose ID, IN. | Maximum Working Pressure PSI at 72°F | Min Burst Pressure PSI at 72°F | Vacuum Rating, IN | Min Bend Radius, IN. | Weight Per Foot, LB. |
|-----------------|-------------------------------|-----------------|--|--------------------------------------|----------------------|-------------------------|-------------------------|
| ST0104 | ST0204 | 0.250 | 3000 | 12000 | 29.9 | 3.00 | 0.08 |
| ST0106 | ST0206 | 0.375 | 2000 | 8000 | 29.9 | 5.00 | 0.12 |
| ST0108 | ST0208 | 0.500 | 1750 | 7000 | 29.9 | 6.50 | 0.15 |
| ST0112 | ST0212 | 0.750 | 1000 | 4000 | 29.9 | 8.50 | 0.22 |
| ST0116 | ST0216 | 1.00 | 1000 | 4000 | 29.9 | 12.00 | 0.31 |
| ST0120 | ST0220 | 1.25 | 1000 | 4000 | 20.0 | 14.00 | 0.36 |
| ST0124 | ST0224 | 1.50 | 900 | 3600 | 15.0 | 15.00 | 0.44 |

ST03 & ST0C 304 Stainless Steel Braided Convolute PTFE Hose

Features:

- Excellent flexibility
- Excellent chemical resistance
- Steam cleanable (SIP)
- Rated for continuous steam
- Detergent or caustic cleanable (CIP)
- Imparts no taste or odor
- Available in bulk or assemblies
- Non-stick, non-contaminating tube is easily cleaned
- Temperature range: -65°F to 450°F (-54°C to 230°C)

Applications:

- Vacuum and pump applications
- Pharmaceutical processing
- Biotechnology
- Bulk transfer
- Load cells



Approvals:

- Meets USP Class VI, FDA, and USDA requirements

| Item # White | Item # Black Conductive | Hose ID, IN. | Maximum Working Pressure PSI at 72°F | Min Burst Pressure PSI at 72°F | Vacuum Rating, IN | Min Bend Radius, IN. | Weight Per Foot, LB. |
|-----------------|-------------------------------|-----------------|--|--------------------------------------|----------------------|-------------------------|-------------------------|
| ST0304 | ST0C04 | 0.250 | 1500 | 6000 | 29.9 | 0.750 | 0.075 |
| ST0306 | ST0C06 | 0.375 | 1500 | 6000 | 29.9 | 1.00 | 0.140 |
| ST0308 | ST0C08 | 0.500 | 1500 | 6000 | 29.9 | 1.50 | 0.156 |
| ST0312 | ST0C12 | 0.750 | 1200 | 4800 | 29.9 | 2.00 | 0.266 |
| ST0316 | ST0C16 | 1.000 | 1000 | 4000 | 29.9 | 2.50 | 0.370 |
| ST0320 | ST0C20 | 1.250 | 750 | 3200 | 29.9 | 3.00 | 0.458 |
| ST0324 | ST0C24 | 1.500 | 650 | 2600 | 29.9 | 3.75 | 0.545 |
| ST0332 | ST0C32 | 2.000 | 450 | 2100 | 29.9 | 4.75 | 0.897 |

ST04 & ST0D

Blue Polypropylene Braided Convolute PTFE Hose

Features:

- Excellent flexibility
- Excellent chemical resistance
- Steam cleanable (SIP)
- Rated for continuous steam
- Detergent or caustic cleanable (CIP)
- Imparts no taste or odor
- Available in bulk or assemblies
- Non-stick, non-contaminating tube is easily cleaned
- Temperature range: -65°F to 450°F (-54°C to 230°C)

Applications:

- Vacuum and pump applications
- Pharmaceutical processing
- Biotechnology
- Bulk transfer
- Load cells



Approvals:

- Meets USP Class VI, FDA, and USDA requirements

| Item # White | Item # Black Conductive | Hose ID, IN. | Maximum Working Pressure PSI at 72°F | Min Burst Pressure PSI at 72°F | Vacuum Rating, IN | Min Bend Radius, IN. | Weight Per Foot, LB. |
|-----------------|-------------------------------|-----------------|--|--------------------------------------|----------------------|-------------------------|-------------------------|
| ST0406 | ST0D06 | 0.375 | 350 | 1400 | 28 | 1.00 | 0.060 |
| ST0408 | ST0D08 | 0.500 | 300 | 1200 | 28 | 1.50 | 0.148 |
| ST0412 | ST0D12 | 0.750 | 250 | 1000 | 28 | 2.00 | 0.180 |
| ST0416 | ST0D16 | 1.000 | 250 | 1000 | 28 | 2.50 | 0.262 |
| ST0420 | ST0D20 | 1.250 | 200 | 800 | 28 | 3.00 | 0.370 |
| ST0424 | ST0D24 | 1.500 | 200 | 800 | 28 | 3.75 | 0.420 |
| ST0432 | ST0D32 | 2.000 | 200 | 800 | 28 | 4.75 | 0.560 |

ST07 & ST0L

Rubber Covered Smooth Bore PTFE Hose

Features:

- Excellent flexibility
- Excellent chemical resistance
- Steam cleanable (SIP)
- Rated for continuous steam
- Detergent or caustic cleanable (CIP)
- Imparts no taste or odor
- Available in bulk or assemblies
- Non-stick, with white, green, blue, purple, and gray covers (STOW – White, STGR – Green, STBL – Blue, ST07 – Purple, ST08 – Gray)
- Temperature range: -40°F to 300°F (-40°C to 149°C)

Applications:

- Vacuum and pump applications
- Pharmaceutical processing
- Biotechnology
- Bulk transfer
- Load cells



Approvals:

- Meets USP Class VI, FDA, and USDA requirements

| Item # White Core | Item # Black Conductive Core | Hose ID, IN. | Maximum Working Pressure PSI at 72°F | Min Burst Pressure PSI at 72°F | Vacuum Rating, IN | Min Bend Radius, IN. | Weight Per Foot, LB. |
|-------------------------|------------------------------------|-----------------|--|--------------------------------------|----------------------|-------------------------|-------------------------|
| ST0708 | ST0L08 | 0.500 | 500 | 2000 | 29.9 | 2.50 | 0.360 |
| ST0712 | ST0L12 | 0.750 | 500 | 2000 | 29.9 | 3.00 | 0.550 |
| ST0716 | ST0L16 | 1.000 | 400 | 1800 | 29.9 | 4.00 | 0.600 |
| ST0720 | ST0L20 | 1.250 | 375 | 1500 | 29.9 | 7.00 | 0.930 |
| ST0724 | ST0L24 | 1.500 | 375 | 1500 | 29.9 | 9.00 | 1.08 |
| ST0732 | ST0L32 | 2.00 | 300 | 1200 | 29.9 | 10.5 | 1.33 |
| ST0740 | ST0L40 | 2.500 | 200 | 1000 | 29.9 | 16.00 | 1.68 |
| ST0748 | ST0L48 | 3.000 | 200 | 1000 | 29.9 | 18.00 | 2.02 |
| ST0764 | ST0L64 | 4.000 | 150 | 750 | 29.9 | 22.5 | 2.83 |

FDA Food-Grade Hose

Nitrile F01

Description:

- Color: Gray cover; White tube
- Length: 100 ft. / 60 ft. continuous
- Size: 1/2" – 4"

Options:

- Assemblies – wide variety of fittings available
- Other materials available – EPDM Chlorobutyl
- Other sizes available
- Available with monofilament wire
- Private labeling

Other Food-Grade Hoses:

- F02 – Brewers, 4ply/6 ply
- F06 – XPLE Crosslink Polyethylene
- P01 – PVC, Clear, Unreinforced
- P02 – PVC, Clear, Braided
- P03 – PVC, Clear, Vacuum, Metal Wire
- P04 – PVC, Clear, Vacuum, Plastic Wire



| Size ID | Tube Nitrile | Fabric | Wire | Bend Radius | Thickness | OD | Max WP | Min Burst | Weight |
|---------|--------------|--------|------|-------------|-----------|------|--------|-----------|--------|
| .5 | 1/16 | 2 | 1 | 2.50 | 3/64 | 0.94 | 200 | 800 | .38 |
| .75 | 1/16 | 2 | 1 | 3.75 | 3/64 | 1.19 | 200 | 800 | .50 |
| 1.0 | 1/16 | 2 | 1 | 5.00 | 3/64 | 1.44 | 200 | 800 | .64 |
| 1.5 | 1/16 | 2 | 1 | 7.50 | 1/16 | 2.02 | 200 | 800 | 1.05 |
| 2.0 | 1/16 | 2 | 1 | 10.00 | 1/16 | 2.62 | 200 | 800 | 1.72 |
| 2.5 | 1/16 | 4 | 1 | 12.50 | 1/16 | 3.10 | 200 | 800 | 2.15 |
| 3.0 | 1/16 | 4 | 1 | 14.00 | 1/16 | 3.74 | 200 | 800 | 2.90 |
| 4.0 | 1/16 | 4 | 1 | 18.00 | 1/16 | 4.78 | 200 | 800 | 4.16 |

Premium Grade Silicone Tubing Platinum-Cured Single Lumen USP Class VI FDA Masterfile



Features & Benefits:

- Platinum cured for a high degree of purity
- Extended post cure for lowest level extractables
- Biocompatible, inert, non-reactive with other elements per systemic testing
- Odorless, tasteless, non-toxic for use in medical, food, drug, personal care, and deionized water applications
- Non-leaching plasticizers
- Sterilizable by radiation, ETO, steam – 30 psi at 253°F (123°C) for use in sterile applications, reusability
- Resists temperature extremes – flexibility retention: -65°F to 400°F (-54°C to 204°C); brittlepoint: -100°F (-73°C)
- Translucent for visual monitoring
- Color stripe, tint for custom process control identification



Biocompatibility Tests:

- Tests conducted per the standards set by the United States Pharmacopoeia National Formulary, Class VI Biological Test for Plastics, and also conducted according to Ph Eur VI.1.3.2.
- SF Medical Platinum Cured Material meets or exceeds the requirements of these protocols. Copies of the studies and raw data are on file at Trelleborg Sealing Solutions Hudson (formerly SF Medical).

| <u>Testing Sample</u> | <u>Results Per Standard</u> |
|------------------------------|-----------------------------|
| Hemolysis Test | 0.0% |
| Heavy Metals as Lead | None Detected |
| Cell Culture Toxicity | None |
| Chromotropic Acid Test | Complies |
| Clarity of Solution | Complies |
| Acidity/Alkalinity | Complies |
| Substances Soluble in Hexane | Complies |
| Volatile Matter | Complies |
| Mineral Oils | Complies |
| Phenylated Compounds | Complies |
| Residual Peroxides | Complies |
| Platinum | Complies |
| Dichlorobenzoic Acid Residue | None Detected |
| HPLC analysis of IPa Extract | |

Elastomer Physical Properties

| | <u>ASTM Method</u> | <u>Typical Values</u> |
|--|--------------------|-----------------------|
| Hardness Durometer A | D-22406 | 60 |
| Tensile strength psi | D-412 | 1275 |
| Elongation % | D-412675 | 625 |
| Tear resistance Die B ppi | D-624 | 1.15 |
| Compression set % (22 hours at 350°F) | D-395 | 40 |

Premium Grade Silicone Tubing

Platinum-Cured Single Lumen USP Class VI FDA Masterfile



- Special packaging arranged upon request
- Furnished in custom lengths, bulk, or cut to length
- Multi lumen, radiopaque, striped, color coded available
- Custom sizes and standard sizes available
- Also available in peroxide cure

| Part No. | I.D. | Wall | O.D. Ref | Std. Length (Feet) | lbs/1000 ft. | Burst psi |
|-----------|--------------|--------------|----------|--------------------|--------------|-----------|
| SFM3-1050 | .012+/-0.003 | .007+/-0.002 | 0.025 | 50 | 0.23 | 25 |
| SFM3-1350 | .020+/-0.003 | .009+/-0.002 | 0.037 | 50 | 0.45 | 25 |
| SFM3-1550 | .025+/-0.003 | .011+/-0.002 | 0.047 | 50 | 0.74 | 35 |
| SFM3-1750 | .030+/-0.004 | .018+/-0.002 | 0.065 | 50 | 1.55 | 45 |
| SFM3-1850 | .031+/-0.004 | .063+/-0.003 | 0.156 | 50 | 10.9 | 70 |
| SFM3-2050 | .040+/-0.004 | .023+/-0.003 | 0.085 | 50 | 2.62 | 45 |
| SFM3-2350 | .058+/-0.005 | .009+/-0.003 | 0.077 | 50 | 1.2 | 30 |
| SFM3-2650 | .062+/-0.005 | .017+/-0.003 | 0.095 | 50 | 2.41 | 40 |
| SFM3-2850 | .062+/-0.005 | .032+/-0.003 | 0.125 | 50 | 5.49 | 44 |
| SFM3-2950 | .062+/-0.005 | .063+/-0.003 | 0.188 | 50 | 14.68 | 65 |
| SFM3-3050 | .078+/-0.005 | .024+/-0.003 | 0.125 | 50 | 4.45 | 40 |
| SFM3-3250 | .104+/-0.005 | .044+/-0.003 | 0.192 | 50 | 12.14 | 43 |
| SFM3-3650 | .125+/-0.005 | .063+/-0.003 | 0.250 | 50 | 21.85 | 43 |
| SFM3-3350 | .132+/-0.005 | .025+/-0.003 | 0.183 | 50 | 7.49 | 30 |
| SFM3-4050 | .187+/-0.005 | .063+/-0.003 | 0.312 | 50 | 29.07 | 29 |
| SFM3-4250 | .187+/-0.005 | .094+/-0.004 | 0.375 | 50 | 49.25 | 43 |
| SFM3-4450 | .250+/-0.006 | .063+/-0.004 | 0.375 | 50 | 36.42 | 21 |
| SFM3-4650 | .250+/-0.006 | .094+/-0.004 | 0.437 | 50 | 59.98 | 31 |
| SFM3-4850 | .250+/-0.010 | .125+/-0.008 | 0.50 | 50 | 87.4 | 43 |
| SFM3-4950 | .312+/-0.007 | .063+/-0.005 | 0.437 | 50 | 43.64 | 17 |
| SFM3-5050 | .312+/-0.007 | .094+/-0.005 | 0.500 | 50 | 71.16 | 25 |
| SFM3-5250 | .375+/-0.010 | .063+/-0.007 | 0.500 | 50 | 50.98 | 14 |
| SFM3-5450 | .375+/-0.010 | .094+/-0.007 | 0.562 | 50 | 81.67 | 20 |
| SFM3-5650 | .375+/-0.010 | .125+/-0.010 | 0.625 | 50 | 116.53 | 29 |
| SFM3-6050 | .500+/-0.010 | .063+/-0.007 | 0.625 | 25 | 65.55 | 11 |
| SFM3-6250 | .500+/-0.015 | .094+/-0.007 | 0.687 | 25 | 103.46 | 16 |
| SFM3-6450 | .500+/-0.015 | .125+/-0.010 | 0.750 | 25 | 145.66 | 22 |
| SFM3-6850 | .625+/-0.025 | .125+/-0.015 | 0.875 | 25 | 174.79 | 18 |
| SFM3-7050 | .750+/-0.025 | .125+/-0.015 | 1.000 | 25 | 203.93 | 15 |

PharmElast™ Silicone Sheeting

USP Class VI

PharmElast™ Sheeting is a translucent or radiopaque silicone elastomer material designed for applications demanding the ultimate compatibility in healthcare and other biologically related applications. PharmElast™ Sheeting is available as a solid silicone sheet or with a polyester tricot reinforcement.

Features:

- Made from USP Class VI Platinum cured high tear strength silicone
- Polyester reinforced sheet minimizes stretch
- Easily cut to desired shape
- Highly permeable to gases
- Will not adhere readily to biologically active surfaces
- Autoclavable without changes in consistency, softness, or other inherent properties
- Excellent biocompatibility as evidenced by its Class VI clearance
- Biologically active fluids have little or no effect on the sheeting
- May be bonded to itself or synthetics (Polyester Tricot) with biologically compatible adhesives



PharmaLim®

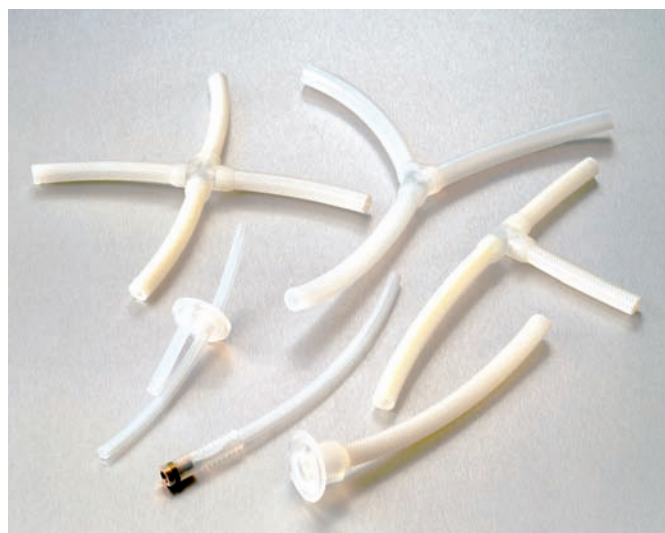
PharmaLim® is a liquid injection molded medical grade silicone product line manufactured in the Trelleborg Sealing Solutions Hudson (formerly SF Medical) FDA-registered facility.

Features:

- Variety of sizes integral/reusable
- Saves time and money
- Provides greater reliability

PharmaLim® Types:

- The PharmaLim® product line includes “Ys” “Ts” and “Crosses”.
- The product line also features 90° elbows in any configuration and size up to a 1/2” ID
- PharmaLim® products also include the molded Tri-clamp ends, bottle stopper with or without tubing, and custom manifolds



How to Order



| HOSE TYPE | |
|--|--|
| PHARMASIL® Platinum Cured | |
| H00 | Pharmatube Unreinforced Tubing |
| H10 | SF-100-HP, 1 Braid |
| H20 | SF-200-HP, 2 Braid |
| H40 | SF-400-HP, 4 Ply |
| H50 | SF-500-HP, 4 Ply Hastaloy® Wire |
| H80 | SF-800-HP, 4 Ply Monofilament Wire |
| H90 | SF-900-HP, 4 Ply Stainless Wire |
| H95 | SF-950-HP, 4 Ply Stainless Wire Convoluted |
| NEUTRASIL® Peroxide Cured | |
| C10 | CW-100, 1 Braid |
| C20 | CW-200, 2 Braid |
| C40 | CW-400, 4 Ply |
| C50 | CW-500, 4 Ply Hastaloy® Wire |
| C80 | CW-800, 4 Ply Monofilament Wire |
| C90 | CW-900, 4 Ply Stainless Wire |
| PTFE SMOOTH BORE | |
| T01 | PTFE, Smooth, White, 1 SS Braid |
| T02 | PTFE, Smooth, Black, 1 SS Braid |
| T0A | PTFE, Smooth, White, 2 SS Braids |
| T0B | PTFE, Smooth, Black, 2 SS Braids |
| PTFE CONVOLUTED | |
| T00 | Convoluted, White, No Braid |
| T0P | Convoluted, White, w/wire only |
| T03 | Convoluted, White, 1 SS Braid |
| T04 | Convoluted, White, Polypro Braid |
| T05 | Vacuum, Convoluted, White, SS Braid |
| T06 | Vacuum, Convoluted, White, Polypro Braid |
| T0C | Convoluted, Black, 1 SS Braid |
| T0D | Convoluted, Black, Polypro Braid |
| T0G | Vacuum, Convoluted, Black, SS Braid |
| T0H | Vacuum, Convoluted, Black, Polypro Braid |
| PTFE RUBBER COVERED | |
| T0W | White Rubber, White |
| T07 | Purple Rubber, White |
| T08 | Gray Rubber, White |
| T0L | Purple Rubber, Black |
| T0M | Gray Rubber, Black |
| FOOD-GRADE RUBBER | |
| F01 | Rubber, Food Grade with Wire |
| F02 | Rubber, Brewers Hose, MultiPly |
| F03 | Rubber, Industrial Grade |
| F06 | Rubber, XLPE Chemical |
| PVC FOOD & BEVERAGE | |
| P01 | PVC, Un-reinforced |
| P02 | PVC, Reinforced Braid |
| P03 | PVC, Vacuum, Wire, Metal |
| P04 | PVC, Vacuum, Wire, Plastic |
| Consult factory if required hose type is not listed | |

| HOSE I.D. | | |
|---|------------|------------|
| # | Size (in.) | Size (in.) |
| 02 | .125 | 1/8 |
| 03 | .187 | 3/16 |
| 04 | .250 | 1/4 |
| 05 | .312 | 5/16 |
| 06 | .375 | 3/8 |
| 08 | .500 | 1/2 |
| 10 | .625 | 5/8 |
| 12 | .750 | 3/4 |
| 14 | .875 | 7/8 |
| 16 | 1.000 | 1 |
| 18 | 1.125 | 1-1/8 |
| 20 | 1.250 | 1-1/4 |
| 24 | 1.500 | 1-1/2 |
| 32 | 2.000 | 2 |
| 40 | 2.500 | 2-1/2 |
| 48 | 3.000 | 3 |
| 64 | 4.000 | 4 |
| OPTIONS – other I.D.s available, consult factory | | |

| LENGTH | |
|--|-------------------------------|
| Imperial | |
| Size is displayed in 1/10s of an inch. | |
| Inches + 1 decimal | |
| Example: | 12-1/2" = 0125 |
| Metric | |
| Convert to feet, then to inches | |
| 1 meter = 3.28 feet | |
| 1 foot = 12 inches | |
| Example: | 10m = 30.3 ft |
| | 30.3 ft = 3636 in (30.3 x 12) |

| FITTINGS | |
|----------------------------------|-------------------------------|
| L.I.M. MOLDED ENDS | |
| Liquid Injection Silicone | |
| SC | Molded, Silicone and Gasket |
| SF | Molded, Silicone, Female |
| SG | Molded, Silicone, Mini/Gasket |
| SH | Molded, Mini Female |
| SK | Molded, Elbow |
| ST | Molded, Tee |
| SY | Molded, Wye |
| SP | Pharma-Seal™, Anti-wick |
| SZ | Molded, Special |

| FITTINGS | |
|--|------------------------------|
| CRIMPED AND REUSABLE | |
| Code | Description |
| MINI-SANITARY | |
| S1 | Sanitary, Mini |
| SM | Sanitary, Mini Set Up |
| SE | 90° Mini Elbow |
| S\$ | 45° Mini Elbow |
| TRI-CLAMP SANITARY | |
| S0 | Sanitary |
| SA | Sanitary, Step Up 1x |
| SB | Sanitary, Step Up 2x |
| S3 | Sanitary, Hose Splicer |
| SL | 90° Elbow |
| SV | 45° Elbow |
| S5 | Bevel Seat, Female |
| S6 | Bevel Seat, Male |
| S8 | I-Line™, Male |
| S9 | I-Line™, Female |
| T1 | Tube, Butt Weld |
| REUSABLE FITTINGS* | |
| SR | Sanitary, Mini |
| SU | Tri-Clamp, Sanitary Reusable |
| PIPE FITTINGS | |
| P1 | Pipe, Butt Weld |
| P2 | JIC Female, Swivel |
| P3 | Pipe NPT Hex, Male |
| P6 | Pipe NPT Hex, Female |
| P7 | Union, Female |
| P8 | Union, Male |
| P9 | NPSH, Female |
| F2 | Flange Retainer, 150# |
| F3 | Flare-Seal, Flange Retainer |
| OTHERS | |
| K2 | Flange Adapter |
| K6 | Locking Handle, Female |
| K7 | Locking Handle, Male |
| KS | Spool Adapter |
| C1 | Tube Compression |
| C2 | Tube Adapter |
| D1 | DIN, Female |
| D2 | DIN, Male |
| V1 | Vacuum-cring Seal |
| V2 | Vacuum, Male |
| V3 | Vacuum, Female |
| FITTING OPTIONS | |
| <ul style="list-style-type: none"> • Elbows • Flange Specials • Step-Up • Step-Down • Concentric Reducers • Eccentric Reducers • Others – Consult Factory | |
| * Reusable fittings available with other ends besides Sanitary, consult factory. | |

| MATERIALS | |
|---|--------------------|
| Code | Description |
| 4 | 304 Stainless |
| 6 | 316 Stainless |
| 7 | 316 Stainless EP |
| B | Brass |
| C | Carbon Steel |
| D | PTFE Encap |
| E | Epoxy ctd. Steel |
| F | Polysulphone |
| H | Hastaloy® |
| K | PVDF (Kynar) |
| M | Monel™ |
| P | Polypropylene |
| R | Delrin® |
| S | Silicone |
| T | PTFE Solid |
| Consult factory if required material is not listed | |

| ACCESSORIES | |
|-------------|------------------------------|
| Code | Description |
| O | None |
| A | Armor Guard |
| B | I.D. Specification |
| C | Clear Silicone |
| E | EPDM Jacket |
| F | Fire Sleeve |
| H | Hypalon™ |
| L | Close Tolerance |
| M | Special Marking |
| N | Tag Assembly |
| P | Polyolefin Heat Shrink |
| R | Restrictor, End Bend |
| S | Spring Guard |
| T | FEP Heat Shrink |
| V | Vacuum, Spring Wire |
| Z | Custom |
| * | Consult Factory for Specials |

| Assembly Length Tolerance | |
|---------------------------|---------------------------------|
| 06" – 24" | Plus/minus 1/2" |
| 25" – 60" | Plus/minus 1/2" |
| Over 60" | Plus/minus 1% of overall length |

SIIFit, PharmaSil, and NeutraSil are registered trademarks of Trelleborg Sealing Solutions. PharmaSeal is a trademark of Trelleborg Sealing Solutions. Hastaloy is a registered trademark of Haynes International. Monel is a trademark of Inco Alloys International. I-Line is a trademark of Cherry-Burrell.